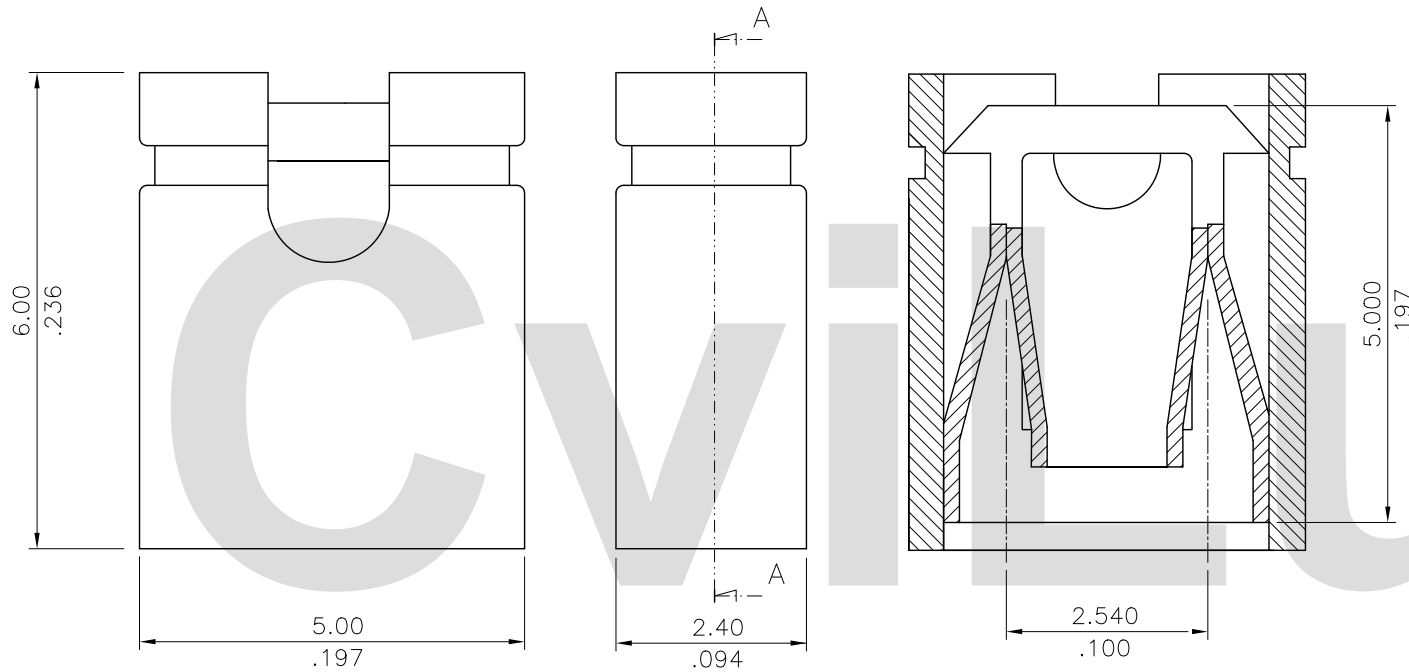


Material:

* Insulation: Glass filled polyester UL 94V-0

△* Contact: Phosphor Bronze



SEC.: A-A

△3

Ordering Code:

CS01 60 2 B 1 00
 ① ② ③ ④ ⑤ ⑥

- ① Series No.
- ② Isulation high:
- ③ Plating option:
2= Gold flash plated over
1.27μm(50μ") Nickel
- ④ Contact type:
B= Open end
- ⑤ Color code:
1= Black ,3= Red ,5= Yellow
,7= Blue
- ⑥ Option:
00= Standard

RoHS Compliant

△4	Sandy	7/22-10'	ECN10266		DATE	UNIT: mm / inch	TITLE: 2.54MM(.100") OPEN TOP SHUNT		瀚荃股份有限公司 CviLux Corporation		
△3	Sandy	5/5/09'	ECN09224		DRAWN BY: Sandy	7/22-10'	TOLERANCE UNLESS OTHERWISE SPECIFIED			MATERIAL:	
△2	Jim	1/25/07'	ECR07007-0/ECN07019		ENGINEER: Eisley	7/22-10'	.X ± 0.30 / .012 X' ± 1"			FINISH:	
△1	SUN	9/30/05'	ECR05067-0/ECN05275		CHECKED BY: David	7/22-10'	.XX ± 0.20 / .008 .X' ±				
SYM	NAME	DATE	REVISIONS	APPROVED BY: David	7/22-10'	.XXX ± 0.10 / .004 .XX' ±		DRAWING NO.	CS0104SE	PART NO.	CS01602B*00
								SCALE	10 / 1	SHEET	1 OF 1