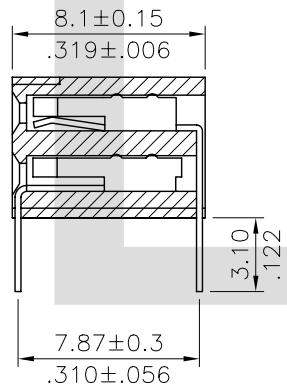
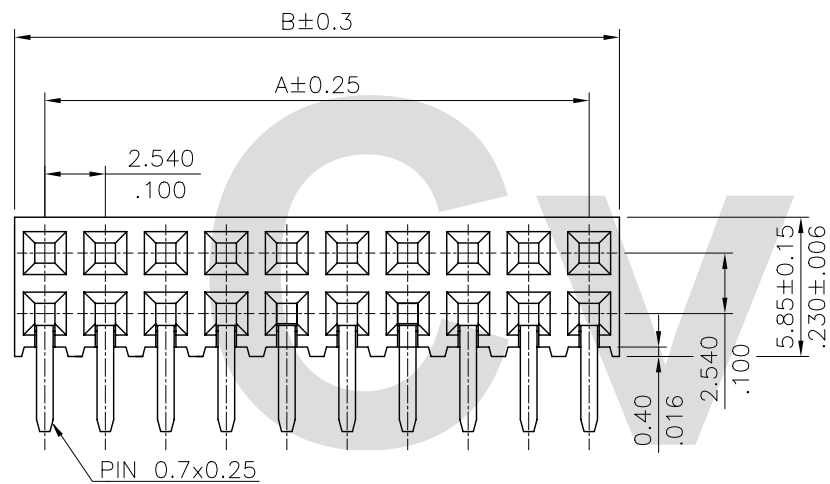
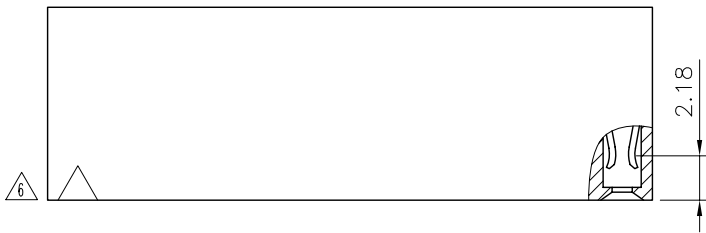


Material:

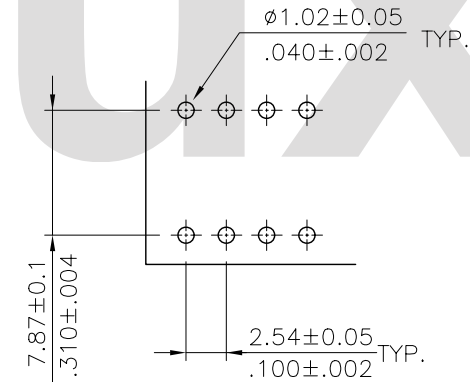
- ④ ⑤ * Insulation: Nylon 6T UL 94V-0
- * Contact: Phosphor Bronze



Ordering Code:

CB97 ** 2 H 1 00
 ① ② ③ ④ ⑤ ⑥

- ① Series No.
- ② NO. of Circuits:
- ③ Plating code:
 - 1 = 3.05μm(120μ") Min. Tin over 0.76μm(30μ") Nickel
 - 2 = Gold flash plated over 1.27μm(50μ") Nickel
- ④ Tail Style: H = Right angle
- ⑤ Color: 1 = Black
- ⑥ Other options: 00 = Standard



Recommended P.C. Board Layout

A = 2.54 * No. of Spaces

B = A + 2.54

③ ⑤ * Available in 4 through 40 circuits

RoHS Compliant

⑥	Sun	10/28-09'	ECN09510/ECR09134-0			DATE	UNIT: mm / inch	TITLE: 2.54MM(.100") DUAL ROW	瀚荃股份有限公司 CviLux Corporation
⑤	Karen	3/05-09'	ECN09091/ECR09005-0	DRAWN BY:	Sun	10/28-09'	TOLERANCE UNLESS OTHERWISE SPECIFIED	SIDE ENTRY BOARD MOUNT CONNECTOR	
④	Sandy	6/27-07'	ECN07254	ENGINEER:	Eisley	10/30-09'	.X ± 0.30 / .012 X' ± 1'	MATERIAL:	DRAWING NO. CB9701SH PART NO. CB97***H100
③	Sandy	5/22-07'	ECN07210	CHECKED BY:	David	10/30-09'	.XX ± 0.20 / .008 .X' ±	FINISH:	SCALE 2 / 1 SHEET 1 OF 1
SYM	NAME	DATE	REVISIONS	APPROVED BY:	Alex	10/30-09'	.XXX ± 0.10 / .004 .XX' ±		

CVILUX CORP
 2009.11.10
 ISSUED